


ALL PLANS AND DOCUMENTS ARE THE SOLE PROPERTY OF SARS FACILITIES SPACE PLANNING. NO REPRODUCTION MAY BE MADE WITHOUT THE WRITTEN CONSENT OF SARS FACILITIES. NOTE: ALL DIMENSIONS MUST BE VERIFIED ON SITE BEFORE THE COMMENCEMENT OF WORK

DATE	NO	AMENDMENT

APPROVALS		
Standards:		
Client:		
IT:		
Security:		
Health & Safety:		
Maintenance:		
DATE	10/2023	
SCALE	1:100 (A1)	
DRAWN BY	GM	
ACC MNGR	AF	
BUILD CODE		
DWG NO		
PROJECT		
AMEND NO		

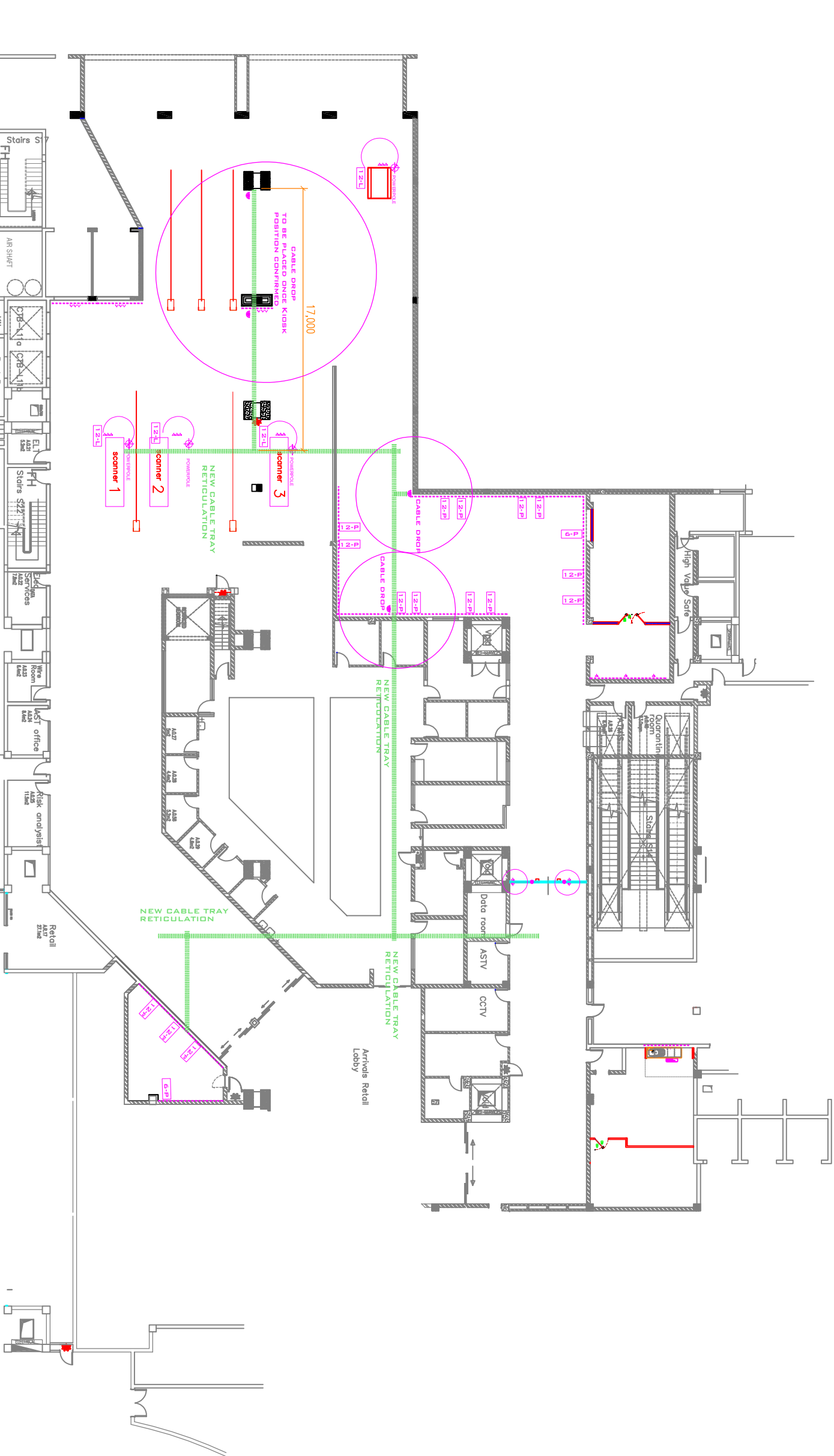
Building Name
ORTIA INTRNTNL

Drawing Description
Electrical

Disc Level
INT. ARRIVALS



SPACE PLANNING & BUILDING FACILITIES MANAGEMENT



CABLE TRAY RETICULATION	
Legend	Description
Green line	30mm - Cable Tray - 15
Pink line	15mm - Cable Tray - 15
Red line	10mm - Cable Tray - 15
DROPS & CORES	
Icon	Description
Pink circle	15 Trunk Cable Drop
Pink square	15 Data Core Through Wall
Pink triangle	15 Data Core Through Wall

SARS END USER ELECTRICAL & I.T. INSTALLATION LEGEND				
White plug	EURO 2 Pin	ELEC-PB-01	TELEKOM VOICE POINT	POWERSKIRTING (SARS ELEC-PS-01)
180° red plug	EURO 2 Pin	ELEC-PB-02	DATA - SARS	
UPS POWER	Thermal Overload	ELEC-PB-03	DATA - Patch 6 Forensic	POWERPOLE
45° Blue Plug				
ELEC-DATA-VOICE DRAWING LEGEND:				
KEY	REQ.	DESCRIPTION	INSTALLED IN	SPECIFICATION DOC(s)
1-W	AA	Min Spec - Telkom	2 off 4x8 Box in drywall	ELEC-MULTIGANG-H2
1-P	AA	Min Spec - Telkom	2 Trunk Power Skirting	ELEC-PS-01
2-W	AA	Min Spec - VOP	4x4 & 4x8 Box in drywall	ELEC-MULTIGANG-H2
2-P	AA	Min Spec - VOP	2 Trunk Power Skirting	ELEC-PS-01
2-C	AA	Min Spec - VOP	4x4 Box in Ceiling	ELEC-MULTIGANG-H2
3-W	AA	Typical Spec - Telkom	2 off 4x8 Box in drywall	ELEC-MULTIGANG-H2
3-P	AA	Typical Spec - Telkom	2 Trunk Power Skirting	ELEC-PS-01
4-W	AA	Typical Spec - VOP	4x12 Box in drywalling	ELEC-MULTIGANG-H3
4-P	AA	Typical Spec - VOP	2 Trunk Power Skirting	ELEC-PS-01
5-W	AA	Cashiers Spec - VOP	2 off 4x8 Box in drywall	ELEC-MULTIGANG-H2
5-P	AA	Cashiers Spec - VOP	2 Trunk Power Skirting	ELEC-PS-01
6-W	AA	PrinterFax VoipMFD	4x12 Box in drywalling	ELEC-MULTIGANG-H3
6-P	AA	PrinterFax VoipMFD	2 Trunk Power Skirting	ELEC-PS-01
7-W	AA	Consultant / M.R. Point	4x4 Box in drywall for ELEC and DATA	ELEC-MULTIGANG-H2
7-P	AA	Consultant / M.R. Point	1 Plug in Power Skirting	ELEC-PS-01
7-C	AA	Consultant / M.R. Point	4x4 Box in Ceiling	ELEC-MULTIGANG-H2
8-W	AA	Fax Station - Telkom	4x4 Box in drywalling	ELEC-MULTIGANG-H2
8-P	AA	Fax Station - Telkom	2 Trunk Power Skirting	ELEC-PS-01
9-W	AA	PowerBox with Flyleads	4x12 Box in drywall for ELEC and DATA	ELEC-MULTIGANG-H3
9-P	AA	PowerBox with Flyleads	2 Trunk Power Skirting	ELEC-PS-01
9-L	AA	PowerBox with Flyleads	4x12 Box in drywall for ELEC and DATA	ELEC-MULTIGANG-H3
10-W	AA	PowerBox with Flyleads	4x12 Box in drywall for ELEC and DATA	ELEC-MULTIGANG-H3
10-P	AA	PowerBox with Flyleads	2 Trunk Power Skirting	ELEC-PS-01
10-L	AA	PowerBox with Flyleads	4x12 Box in drywall for ELEC and DATA	ELEC-MULTIGANG-H3
11-A	AA	AGENT STANDARD	2x4x12 Box in drywall for ELEC and DATA	ELEC-MULTIGANG-H2
11-B	AA	AGENT & PRINTER	2x4x12 Box in drywall for ELEC and DATA	ELEC-MULTIGANG-H2
12-W	AA	PowerBox with Flyleads	4x4 Box in drywall for DATA	ELEC-PB-03
12-P	AA	PowerBox with Flyleads	4x4 Box in drywall for DATA	ELEC-PB-03
12-L	AA	PowerBox with Flyleads	4x4 Box in drywall for DATA	ELEC-PB-03
13-P	AA	TL1 / Back Office (Add)	2 Trunk Power Skirting	ELEC-PS-01
14-W	AA	Forensic Lab	2 Trunk Power Skirting	ELEC-PS-01
15-W	AA	Branch Office Tel Counter	1x Data in 10x1000 Copper Box	ELEC-PS-01
16-W	AA	TELEKOM Voice Point	1x PowerSkirting or 4x4 Box depending on site	ELEC-PS-01
10-P	AA	curved line indicates proposed route / linking of power with from Power set to wall / trunking or interlink		
REVISION B (REVISED ON 28/05/2013)				
ELECTRICAL WIRING REQUIREMENTS: Contractors are to note that SARS End User requirements STRICTLY include ALL ELECTRICAL WIRING from (i.e. PLUS) back to DB Board, and where necessary, additional CIRCUIT BREAKERS on DB BOARD are to be INCLUDED in contractors priced quote or bills (mandatory) All electrical wiring is to strictly follow proper routing to DB board via power skirting, cable trays, etc. Contractor is to ensure priced quote or priced bills include this cost All Plug(s), light(s), Geyser(s) etc are to be marked with identification stickers with matching identification on DB Boards All wiring is strictly abide by ECA (SA) and SANS rules and STANDARDS by-laws, including any additional by-laws stipulated by Local Authorities or electrical design engineers All electrical work must be accompanied with a supporting valid COC signed by both the responsible party and company with VALID membership numbers				
NOTES - 4x4 / 4x8 / 4x12 boxes: A maximum of 5 stand above plugs to be connected to a dedicated 20amp circuit breaker via 2.5mm core - Power Data: A maximum of 5 stand above power sets to 1 plug to be connected to a dedicated 20amp circuit breaker via 2.5mm core				
NOTE TO PROJECT MANAGERS: - No Generator power is indicated on the electrical drawing - Please co-ordinate generator power requirements with Business and the Electrical Engineer on prior request				